



Borer Free



Termite Free



Waterproof



Eco Friendly



Fire Proof



Resistance to Natural Elements



No Special Tools



Cost Effective



Satisfaction Guaranteed

# facadetech

Ventilated Facade Systems

: [facadetech-il.com](http://facadetech-il.com)

: [info@facadetech-il.com](mailto:info@facadetech-il.com)

: 074-7049477



**facadetech**  
Ventilated Facade Systems

**EXTERIOR HPL CLADDING**

COVER IT WITH STRENGTH AND DEBONAIR

Premium Quality  
Exterior HPL  
Cladding

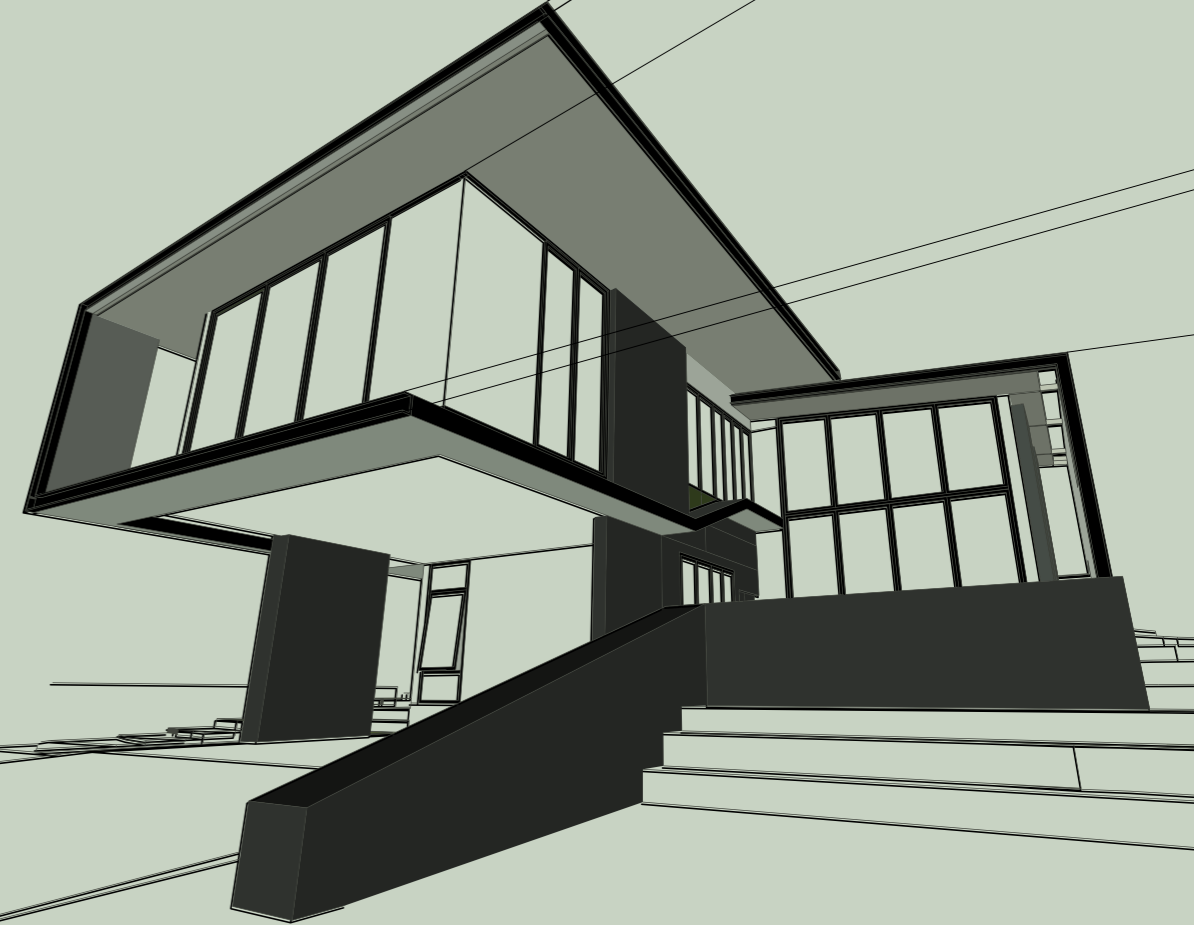
**facadetech**  
Ventilated Facade Systems



# EXTERIOR HPL CLADDING

COVER IT WITH STRENGTH AND DEBONAIR

Premium Quality  
Exterior HPL  
Cladding



# OUR JOURNEY

**1988**  
Establishment of Samrat Plywood Limited (SPL) with one production line.

**1994**  
Added the second production line in SPL.

**1997**  
Added the third production line in SPL.

**1996**  
Introduction of Decorative Veneers by the name of Airosa.

**1998**  
Launched the first TV campaign and became the second in the industry to have launched a TV campaign.

**2001**  
Second Manufacturing unit was set up with two production lines for manufacturing MR plywood and flush doors.

**2004**  
Company stood as the third largest among its national counterparts in the industry.

**2007**  
Introduction of Decorative Laminates by the name of Samrat MICA.

**2001**  
Forayed into a new product line by manufacturing decorative laminates.

**2006**  
Forayed into a new product line by manufacturing decorative laminates.

**2008**  
Widened the distribution network of laminates across 16 states in the country.

**2015**  
Increased global presence of Samrat Laminates in 6 countries

**2011**  
Started new Door Manufacturing Unit

**2020**  
Global Presence increased to 18 countries along with PAN India Presence

**2008**  
Addition of a new HPL press with bigger size capacity up to 1300x3050 mm

**2013**  
Launched a new product globally - Exterior Grade Compact HPL

## facadetech Ventilated Facade Systems

### פסאדטק טכנולוגיות מעמפת לבניין בע"מ

יבוא ושיווק יעיר לפרויקטים של חומרי חיפוי חזיתות חוץ. להתקנה בעיטמה היבשה / חזית מאווררת. החברה מספקת שרותי חכנון, ניהול וביצוע חיפויים ת בכל חומי הבניה - מסחר, ציבור ובניה רוויה למגורים.

- לוחות HPL
- בטון אדריכלי
- לוחות פייבר צמנט
- אלומיניום ואלוקובונד
- לוחות מחומרים מרוכבים / פיברגלס
- רשתות אקספנדר
- מתכות
- ועוד סוגים נוספים של חיפויים המשולבים על חזיתות המבנים ליצירת נראות אסתטית, מודרנית, קלאסית, נקיה ואטרקטיבית

לבעלי ועובדי החברה ניסיון של עשרות שנים בחיפויי חזיתות בניינים בעיטמת החזית המאווררת (Ventilated Facade Systems).

facadetech-il.com



## What makes Facadtech Exterior Cladding special ?

Introducing the all new innovation from house of Facadtech, Special fade resistance range of Exterior Cladding to withstand the adverse action of atmospheric Ultra Violet Rays and exterior atmospheric effects with minimum fading of colours.

These cladding are strong, self supporting and durable, promising incredible value and trendy designs, paired with greater durability which allows your outdoors to withstand the weather and withering effects.

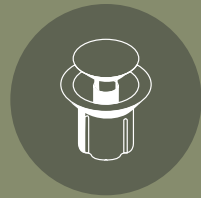
Versatile, durable and practical, Facadtech Exterior HPL Cladding are ideal for facades, balconies, outdoor furniture and other exterior applications, Facadtech's high quality Exterior Cladding are available in large format panels for cladding balconies and building facades.

Enveloped with Facadtech's perfection, your building will cast an unforgettable impression ever time.

## Certification



# Installation system



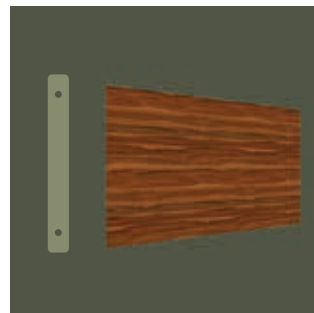
Riveted



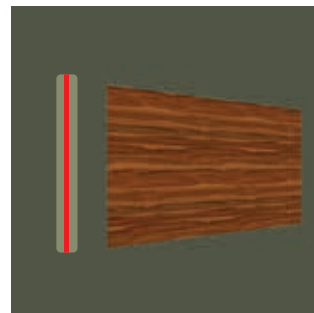
Adhesive



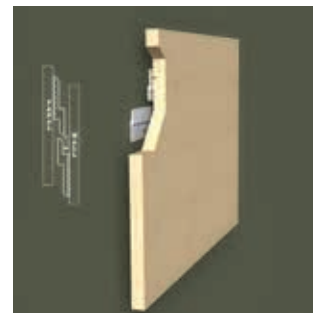
Z-Clip



Riveted Fixing



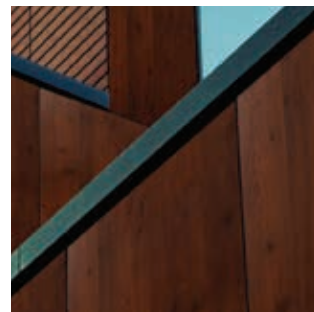
Adhesive Fixing



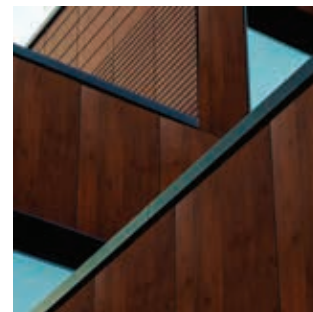
Z-Clip Fixing



Finished Wall



Finished Wall



Finished Wall

# Available Full Sizes Wall Cladding

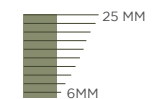


## Sizes available

- Standard Sizes - 1220X2440 MM,
- Bigger Sizes - 1220X3050 MM,

## Thicknesses available

- 6MM up to 25 MM



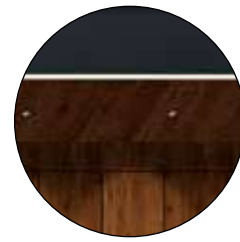
# Application Space Check



A s Highlighter



Out Side Wall



Ceiling



Balcony Wall



commercial



Residence



hotels building



hospital building

## Use Cladding Products

Introducing the all new innovation from house of Facadtech, Special fade resistance range of Exterior Cladding to withstand the adverse action of atmospheric Ultra Violet Rays and exterior atmospheric effects with minimum fading of colours.

# Benefits of Cladding

Easy To Clean



Water Proof



Fire Retardant



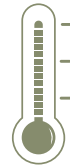
Resistance To UV Rays



Durability



Weather Resistance



Borer Free



Termite Free



# Features & Characteristic Advantages

- ▶ **Aesthetic Appeal** - Uniform decors and colours which come in different shapes and sizes give you freedom to architectural view.
- ▶ **Resistant to UV Rays** - Facadtech Exterior cladding is highly resistant to UV rays found in Sun Light and therefore, panels do not lose its original colour and hue in direct sun light.
- ▶ **Weather Resistance** - Excellent dimensional stability under different extreme weather conditions.
- ▶ **Easy to Clean** - Panels do not attract dust and therefore easily using cleanable with damp cloth.
- ▶ **Fire Retardant** - HPL are difficult to ignite and have properties that retard spreading of flames. In a fire situation they do not soften or release burning droplets.  
  
Through the right selection of quality and thickness (standard or fire retardant grade) HPL can meet the highest fire performance achievable with organic materials.
- ▶ **Cost Effective** - No maintenance cost, replacement of individual panel is possible.  
  
Acts as a barrier of wind, rain and sunlight.
- ▶ **Mechanical and Physical Properties**
  - Resistance to scratching
  - Resistance to abrasion
  - Impact strength
  - Resistance to cigarette burns
  - Resistance to heat
  - Light fastness
  - Antistatic up to electrical dissipation.
- ▶ **Chemical Properties**
  - Resistance to staining
  - Resistance to chemical attack
  - Resistance to organic solvents
  - Resistance to steam
  - Resistance to boiling water.
- ▶ **Physiological Characteristics of HPL Surfaces** - HPL are hygienic, harmless, non toxic and can be safely used in contact with food.
- ▶ **Diffusion Barrier**  
When bonded to a substrate HPL acts as a barrier preventing the emission of potential volatile substances.
- ▶ **Durability** - Compared to other decorative materials like paints, thermoplastic foils, veneers etc, HPL offers a significantly longer life time. For indoor applications, a minimum life time of 20 years can be expected without loss of appearance and performance.

**over 7 lakh panels / 2.5 million sqmtrs**

installed worldwide up till 2022.

**Samrat Exterior claddings is sold** in over 25 countries across the globe.

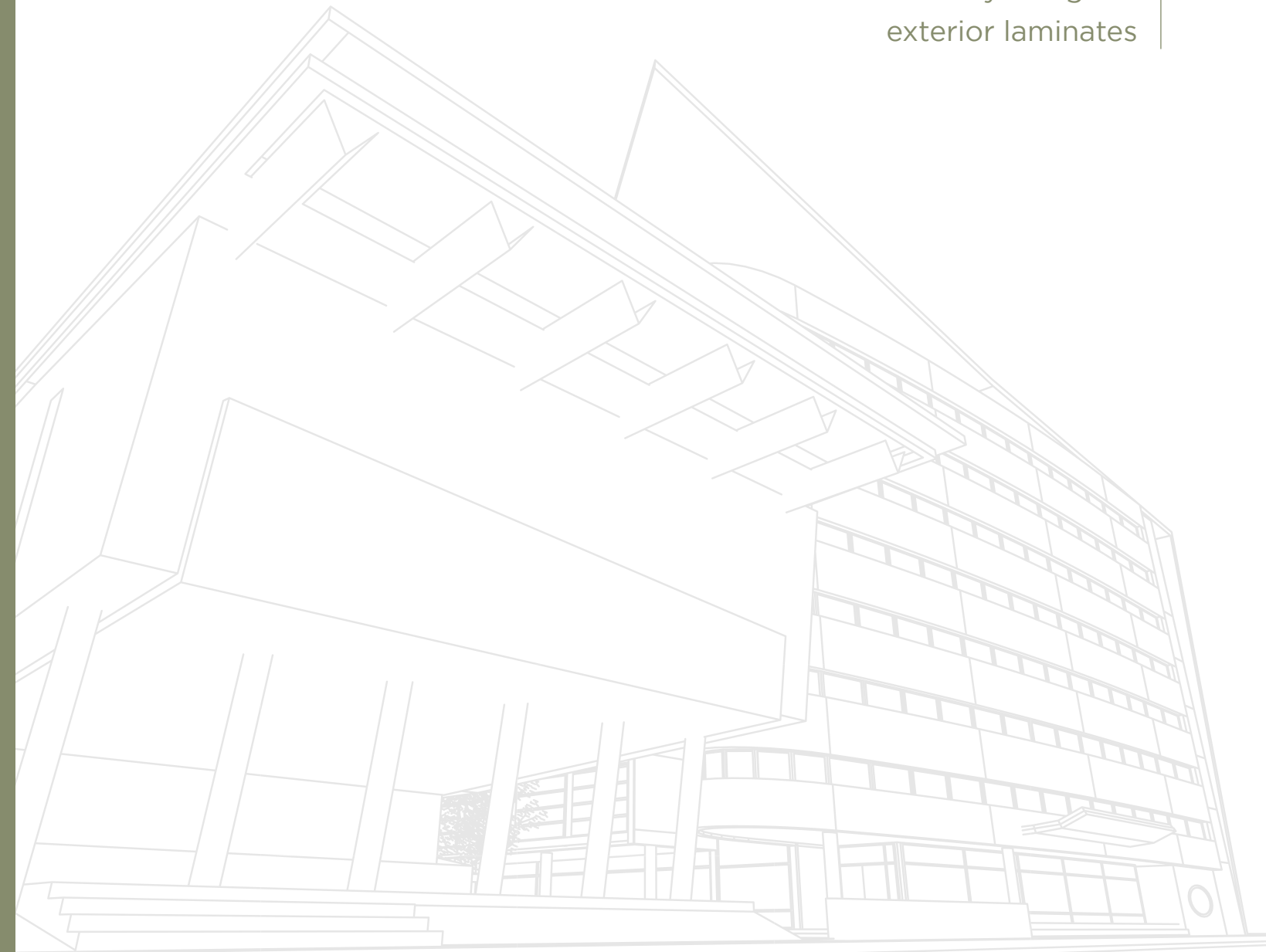
**Samrat Exterior Claddings** are recommended by more than 2000 architects across the globe.

**Samrat Exterior Grade Panels** comes with FR Grade quality required in the most projects everywhere across the globe.

[www.facadetech-il.com](http://www.facadetech-il.com)

# Casting charm & art

Our beautifully designed  
exterior laminates





TRIN



2204 SF • ORIGINAL PINE



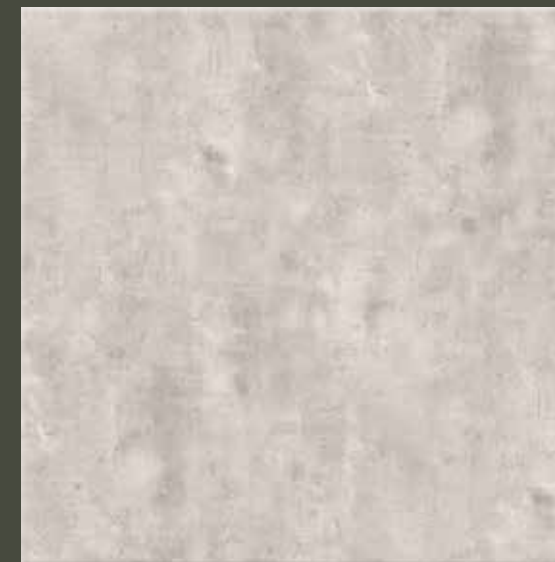
## IDEAS

Emerging in the interior industry, our cladding get more innovative.





807 SF • GREY CONCRETE



806 SF • WHITE CONCRETE

MARKET



**IMITATED**

People are moving closer to nature, so are we!



**BREAK**  
Material and colours that  
seek an escape from  
everyday life.



817 SF • DELANO OAK LIGHT



818 SF • DELANO OAK DARK



# CLADDING



## FULFILLING

The cladding you are seeking  
is seeking you.



453 SF • WISCONSIN WALNUT



454 SF • AMERICAN ELM



## STURDY

open a variety of exterior  
décor possibilities.

ALBERTO



993 SF • CLASSIC WALNUT



822 SF • CASPIO LIGHT



823 SF • CASPIO DARK

WORLD  
FERRIN



## CROWN

These marble- looking cladding have a minimalist aesthetic and are cool.



# DESIGN

**facadetech**  
Ventilated Facade Systems



## EXTRA-ORDINARY

We know how to design stunning walkways, exteriors and walls!



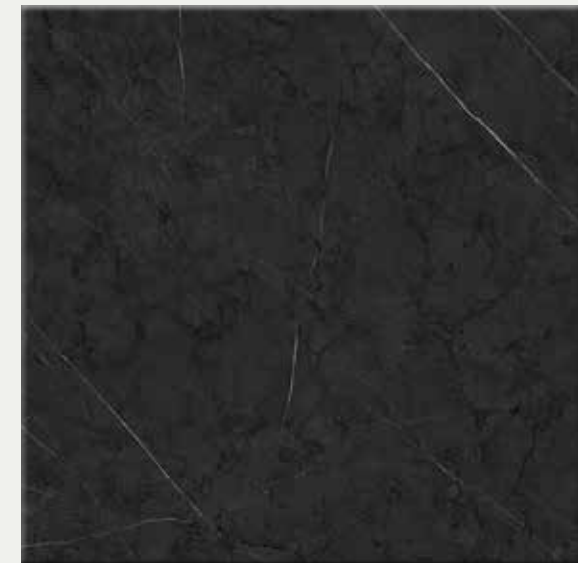
2222 SF • TRAVENTINO MARBLE



2212 SF • AMERICAN GRANITE



**UPPER-CLASS**  
a contemporary look for a playful  
living experience.



662 SF • BLACK STONE



7720 SF • HASTING SANDAL



7723 SF • KITAMI ELM



2233 SF • ICE CREAM WOOD

BRIGHTEN



## LEVEL-UP

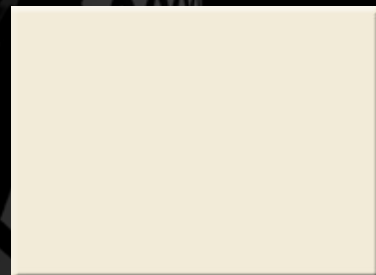
Get your cladding sheet to brighten up your walls!



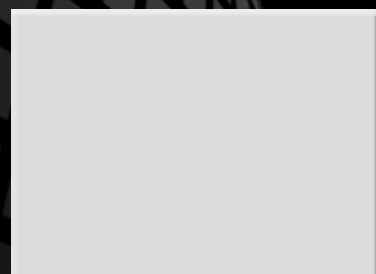


# CURATED

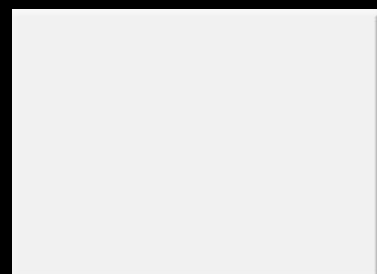
Beauty lies in details.



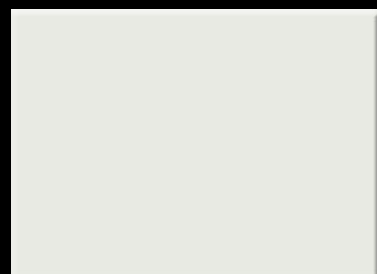
1118 SF • IVORY



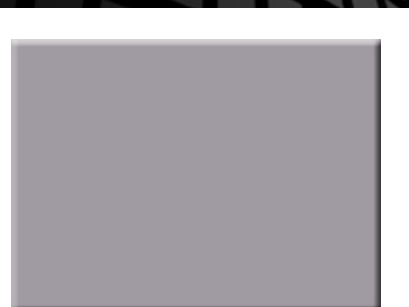
100 SF • WOOL



101 SF • WHITE



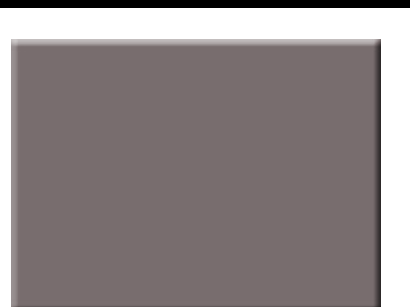
102 SF • FROSTY WHITE



112 SF • STONE GREY



115 SF • SMOKE GREY



208 SF • TAUPE



106 SF • IVORY



103 SF • TAN BROWN



184 SF • COFFEE



117 SF • SLATE GREY



115 SF • SMOKE GREY



200 SF • BLACK



125 SF • PINK BERRY



137 SF • ELECTRIC BLUE

**PURE DESIGNS**  
Contemporary, simple, versatile.



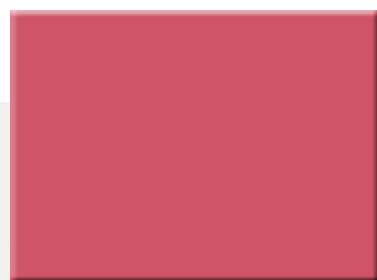
147 SF • BRIGHT YELLOW



201 SF • PARROT GREEN



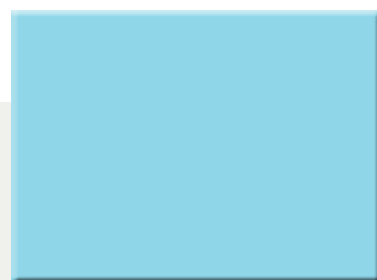
151 SF • GREEN



128 SF • ELECTRIC PINK



136 SF • BLUE



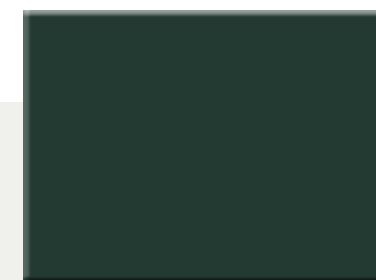
210 SF • SKY BLUE



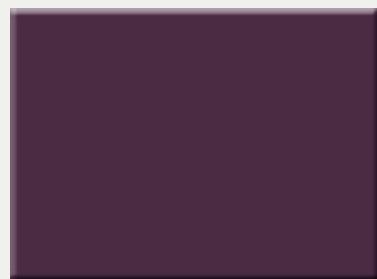
203 SF • MEHNDI



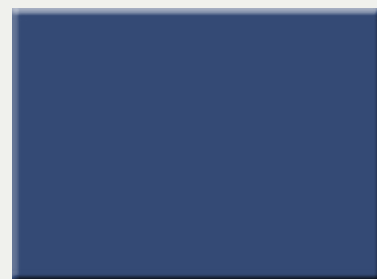
202 SF • OLIVE



154 SF • IVY GREEN



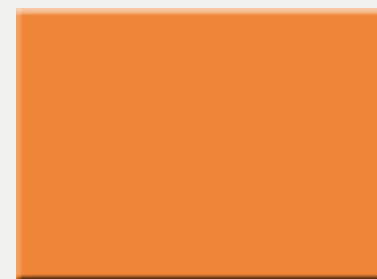
185 SF • BLACK CURRENT



206 SF • DARK BLUE



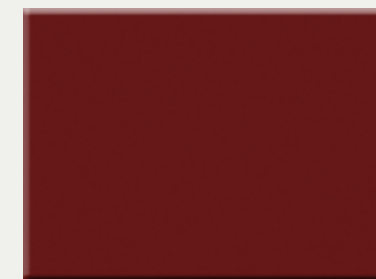
139 SF • DENIM BLUE



145 SF • ORANGE



129 SF • RED



188 SF • MAROON

# TECHNICAL SPECIFICATIONS

SL. No.	PROPERTIES	TEST METHOD	ATTRIBUTES OF PERFORMANCE	UNIT OF MEASUREMENT	RESULTS (AS PER EN 438-7)
<b>1</b>	<b>DIMENSIONAL PROPERTIES</b>				
1.1	Thickness	EN 438-2.5	Thickness to larence	6 mm	5<T < 8 : 0,4
1.2	Size	EN 438-2.6	Length and width	8	+10/- 0
1.3	Straightness of edges	EN 438-2.7	Straightness of edges	mm/m	<1, 5
1.4	Squareness	EN 438-2.8	Squareness	mm/m	<1, 5
1.5	Flatness	EN 438-2.9	Flatness (measured on full size sheet).	mm/m	2,0<T< 6,0 : 8
<b>2</b>	<b>PHYSICAL PROPERTIES</b>				
2.1	Flexural Modulus	EN ISO 178	Stress	Mpa	> 9000
2.2	Flexural Strength	EN ISO 178	Stress	Mpa	> 80
2.3	Tensile Strength	EN ISO 527-2	Stress	Mpa	> 60
2.4	Density	EN ISO 1183	Density	gm/cm	> 1,35
2.5	Resistance to impact with large diameter ball	EN 438-2.21	Indent. dia 10mm 2<T< 6mm Drop Height Indent. dia 10mm T> 6mm - Drop Height	min. min.	> 1400 > 1800
2.6	Resistance to Wet Conditions	EN 438-2.15	Mass increase -2 < T< 5mm Mass increase -2 > T< 5mm Appearance	max. % max. % Rating	EGS/EDS- <7, EGS/EDS- <10 EGS/EDS- <5, EGS/EDS- <8 > 4
2.7	Dimensional stability at elevated temperatures	EN 438-2.17	Cumulative dimensional change - 2 < T< 5mm Cumulative dimensional change- 2 > T< 5mm	Longitudinal % Transversal % Longitudinal % Transversal %	<0,40 <0,80 <0,30 <0,60
<b>3</b>					
3.1	Resistance to Climatic Shock	EN 438-2.19	Thermal Shock Resistance - Appearance	Rating	>4
3.2	Resistance to Artificial Weathering	EN 438-2.29	Contrast	Grey scale rating	> 3

# FOAM SHEET PEST